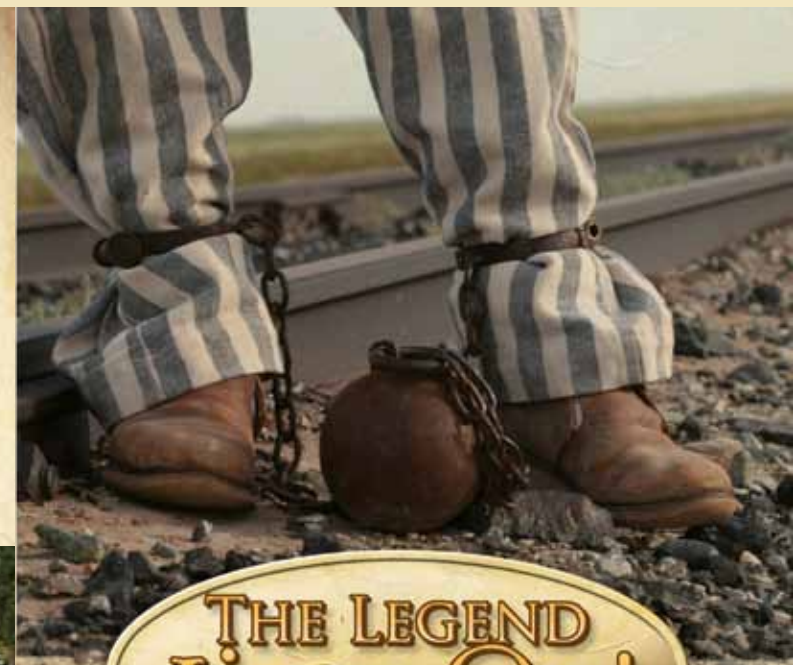


## WELCOME TO THE YUMA CROSSING NATIONAL HERITAGE AREA!

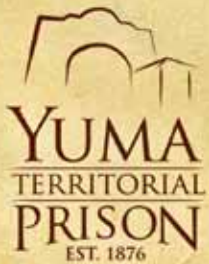
Over the past decade, the Yuma community has transformed its waterfront on the Colorado River. Seven miles of bike trails have been built. Along these trails, two beautiful riverfront parks have been built—West Wetlands and Gateway Park. Hundreds of acres have been restored in the Yuma East Wetlands, within which a three mile hiking trail has been created.



THE LEGEND  
Lives On!



THE COLORADO RIVER  
CARVING YUMA'S PLACE IN HISTORY



These great recreational opportunities surround the downtown riverfront, which features the Yuma Crossing National Historic Landmark. The Landmark's main attractions are the Yuma Territorial Prison State Historic Park, the Yuma Quartermaster Depot State Historic Park, and Pivot Point Interpretive Plaza. The two state parks were scheduled to close due to state budget cuts, but the City of Yuma and the entire Yuma community rallied to raise the funds to keep the parks open and to operate them directly. Learn more about this on [historicyumaprison.com](http://historicyumaprison.com)

Come discover why the Yuma Crossing remains a national treasure.

For more information and to see our calendar of events go to:

**VISITYUMA.COM**



We welcome group tours

YUMA ARIZONA

YUMA VISITORS CENTER  
928.783.0071 • 1.800.293.0071  
201 N. 4th Ave. Yuma, AZ 85364



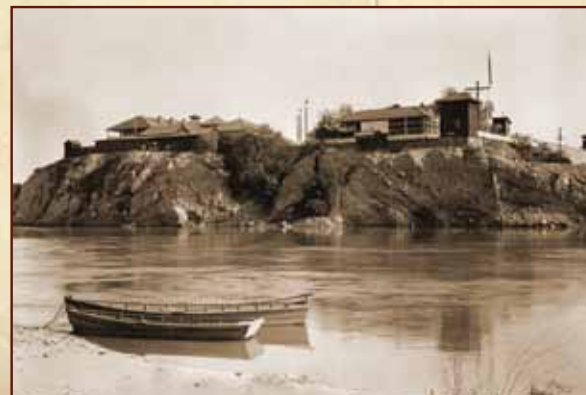
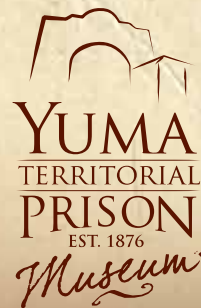
## YUMA TERRITORIAL PRISON STATE HISTORIC PARK

*The "3:10 to Yuma" came here...*

On July 6, 1876, the first seven inmates entered the Territorial Prison at Yuma and were locked into the new cells they had built themselves. Thus began the legend of the Yuma Territorial Prison. A total of 3,069 prisoners, including 29 women, lived within the walls during the prison's 33 years of operation. Severe overcrowding forced its closure on September 15, 1909.

From 1910 to 1914, the Yuma Union High School occupied the buildings. When the school's football team upset a heavily-favored Phoenix team, the Phoenix crowd taunted the Yuma team as "criminals". The school thereafter adopted the mascot with pride, sometimes shortened as the "Crim's".

During the Great Depression, the structures fell into great disrepair, but the Yuma community fought to preserve the Prison as a city museum and then a state historic park. In 2010, Yuma "Chain Gangs" raised the funds to once again save the park.



## YUMA QUARTERMASTER DEPOT STATE HISTORIC PARK

In 1864, the Yuma Quartermaster Depot began supplying all the military posts in the Southwest, off-loading from river boats. The coming of the railroad brought an end to the Depot's supply role in 1883. It then served as headquarters for the building of the area's canals and dams. Today, it recounts these stories and hosts the Yuma Visitors Center.



## PIVOT POINT INTERPRETIVE PLAZA

In 1877, the first railroad to enter Arizona arrived on this exact spot. Called "Pivot Point" because of the swing span bridge that accommodated both rail and steamboat traffic, the plaza now tells the many stories of the Yuma Crossing. The highlight of the plaza is the "Ghost Train" sound and laser system which brings to life the legacy of the Southern Pacific Railroad.



### YUMA TERRITORIAL PRISON

Open Daily, 9am-5pm.

June 1 - August 31: Open Thurs. - Mon.; Closed Tues. & Wed.

928.783.4771 100 N Prison Hill Rd. Yuma AZ 85364

### YUMA QUARTERMASTER DEPOT / YUMA VISITORS CENTER

Open Daily, 8am-5pm.

June 1 - August 31: 9am-5pm Mon-Sat. Closed Sun.

928.783.0071 201 N. 4th Avenue Yuma, AZ 85364